

DK-855 Cyclone DusKolektor

2100 CFM

The cyclone model DK-855 is the same as the DK-8 on page 12, except that it has a 55 gal. drum dirt container which provides 35% greater dirt capacity.

Extra Equipment:

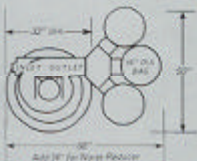
Hopper Base with 34 cu. ft. capacity. See pg. 12.

Model DAF-500 AfterFilter. See pg. 16.

Noise Reducer. See pg. 10.



FLOOR PLAN Top View



The blower housing may be rotated so that the outlet may be in a different position relative to the inlet and also relative to the dirt container dust.

55 gal. drum
on casters

SPECIFICATIONS — CFM, Velocity, and Static Pressure are determined by ASCA Test Code Procedures.

Model	Motor	CFM	Velocity FPM	Static Pres.	Maximum Collection Capacity			DRA, Inlet Response			Bags						
					Grossing Dust Wheats	Buffing or Brushing Wheats	Air. Bags w/Inlets (WUS)	Air. Bags w/Inlets Wheats (WUS)	without Noise Reducer	with Noise Reducer	Inlet Dia.	Outlet Dia.	3rd Curve Cap. Cu.Ft.	%	Gross Filter Area Sq.Ft.	Net Wt. Lbs.	Ship. Wt. Lbs.
DK-8	3HP TEFC	2100	6000	4.8"	Four 16x27"	Four 16x37"	Five 4"	Three 4"	86	78	8"	9 1/4"	5%	3	78	140	640
DK-855	3HP TEFC	2100	6000	4.8"	Four 16x27"	Four 16x37"	Five 4"	Three 4"	86	78	8"	9 1/4"	14%	3	78	140	730

Electrical Specifications: 230-480 v., 3ph., 60 Hz.